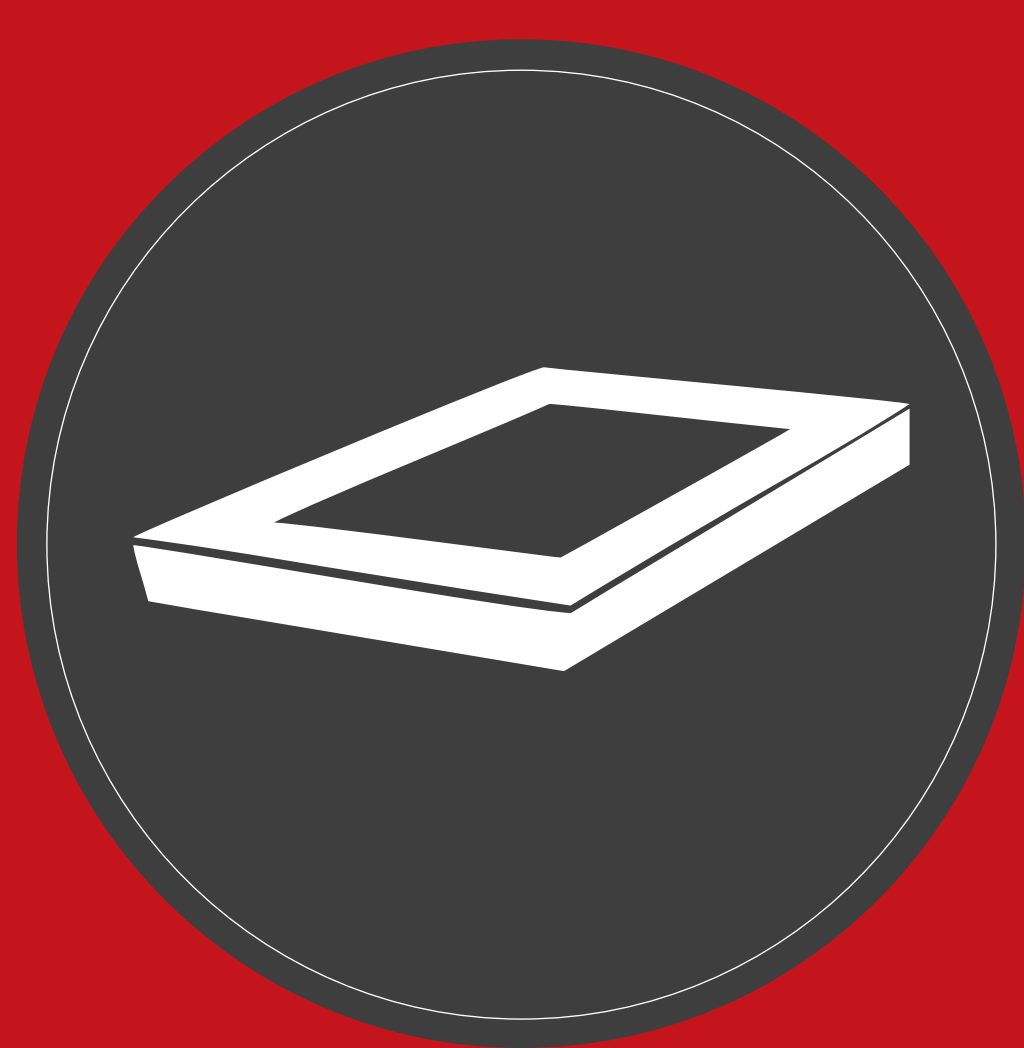




PRESSURE



SCAN



MODEL



MILL



SUPPORT

Case Study 6

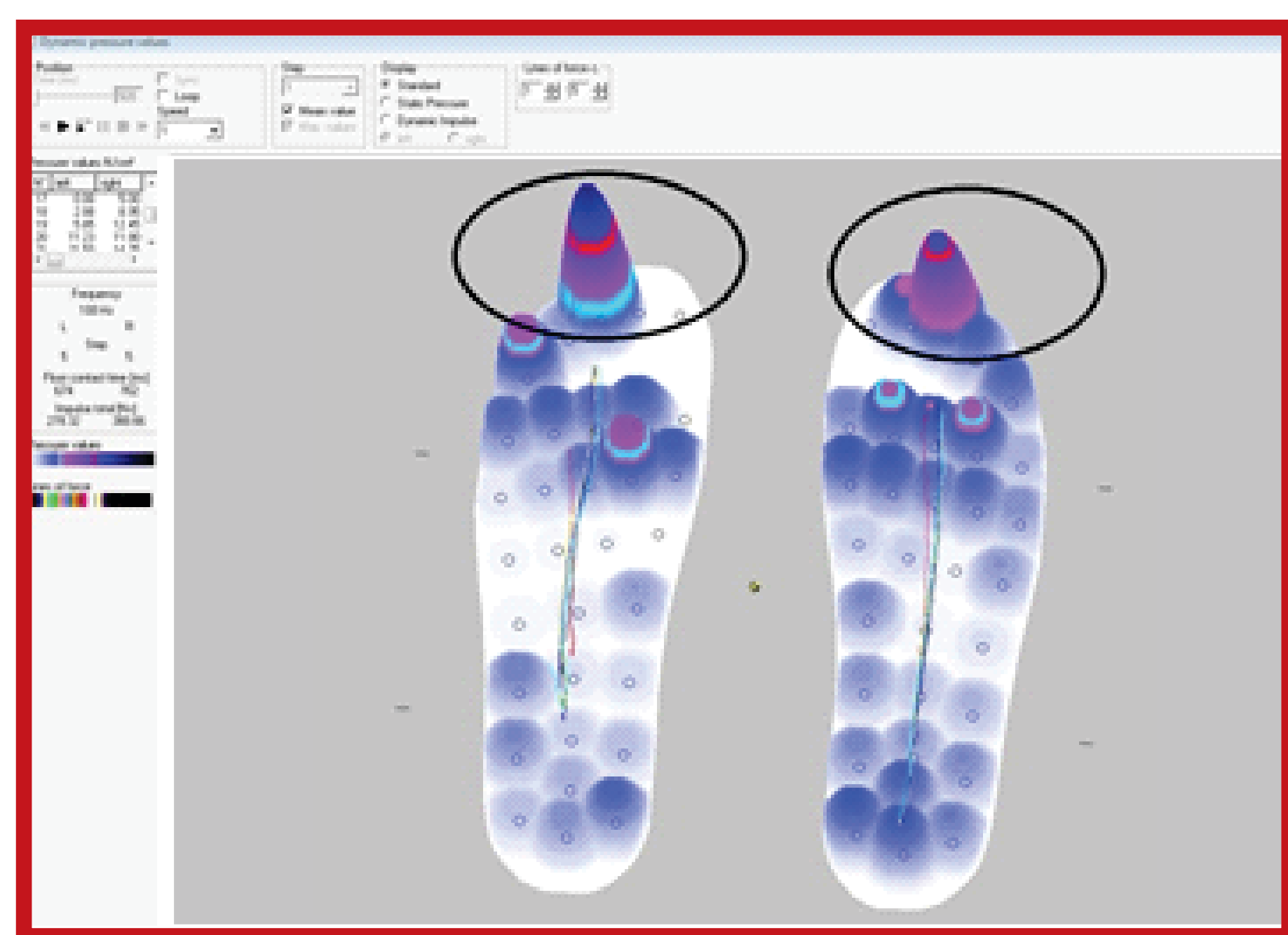
History

66 y/o Male presents on referral from Hyperbaric Chamber

- › Medical Hx; Parkinsons disease with DBS implant, OSA, gout and arthritis
- › Current bilateral neuropathic ulcers
- › Unsuitable candidate for hyperbaric oxygen therapy
- › Rv of current orthotics required
- › MRSA infection in hospital



Assessment / Diagnosis



- › Active Ulcers on bilateral hallux
- › Left side foot drop after fracture of the spine L4/5
 - › Significant muscular wasting gastroc/soleus, gluteals
 - › Ankle equinus
 - › VGA; Left foot drop, right hyperpronation to end range of motion
 - › Good vascular supply reported in Doppler findings

Pressure

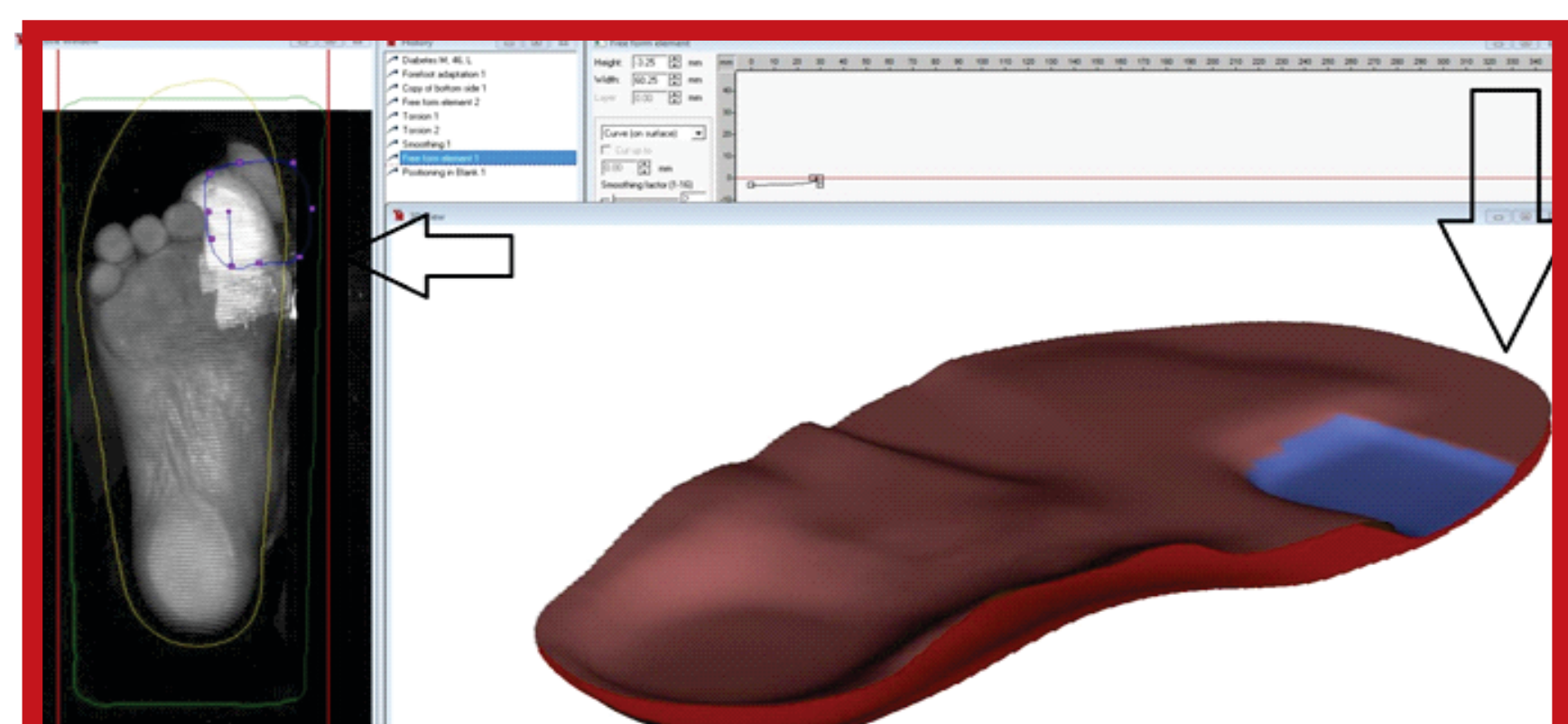
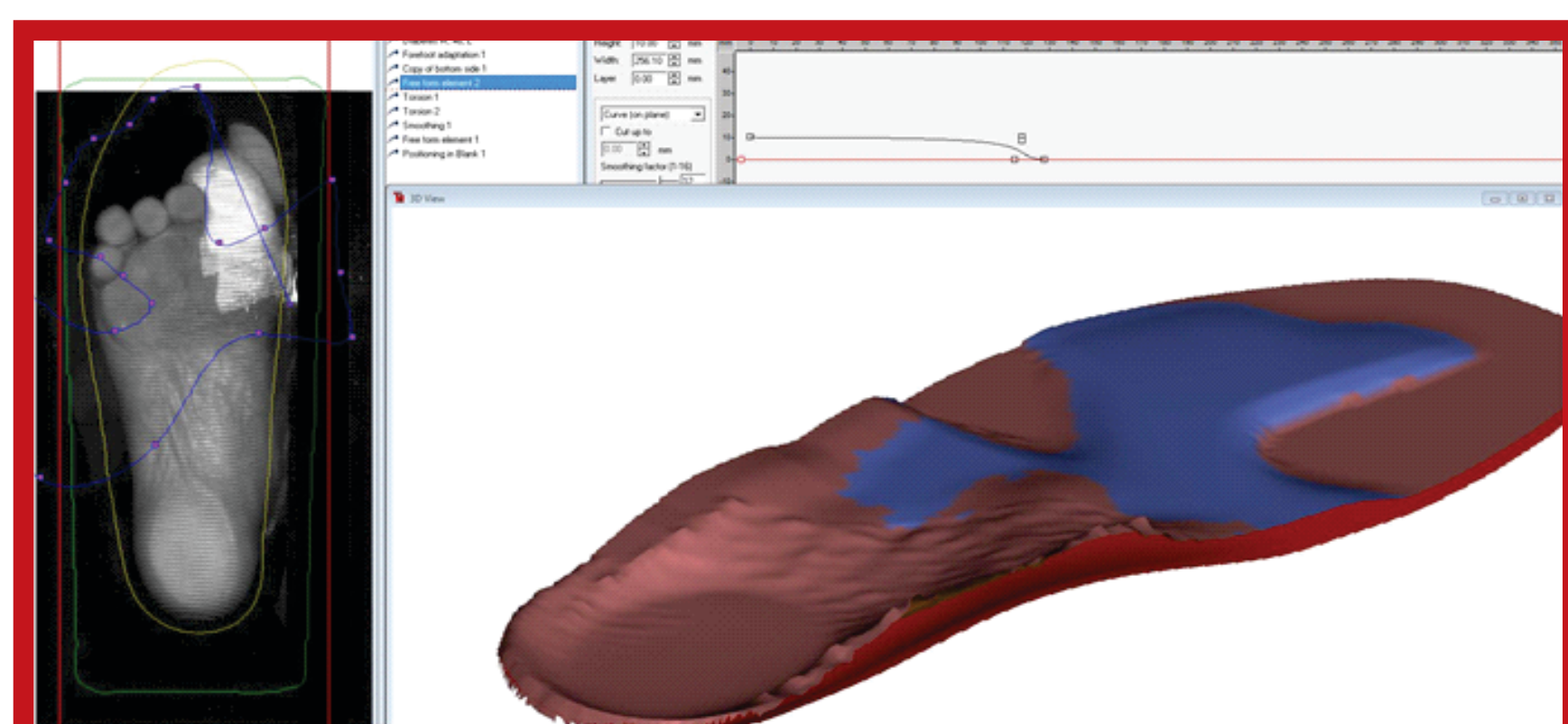
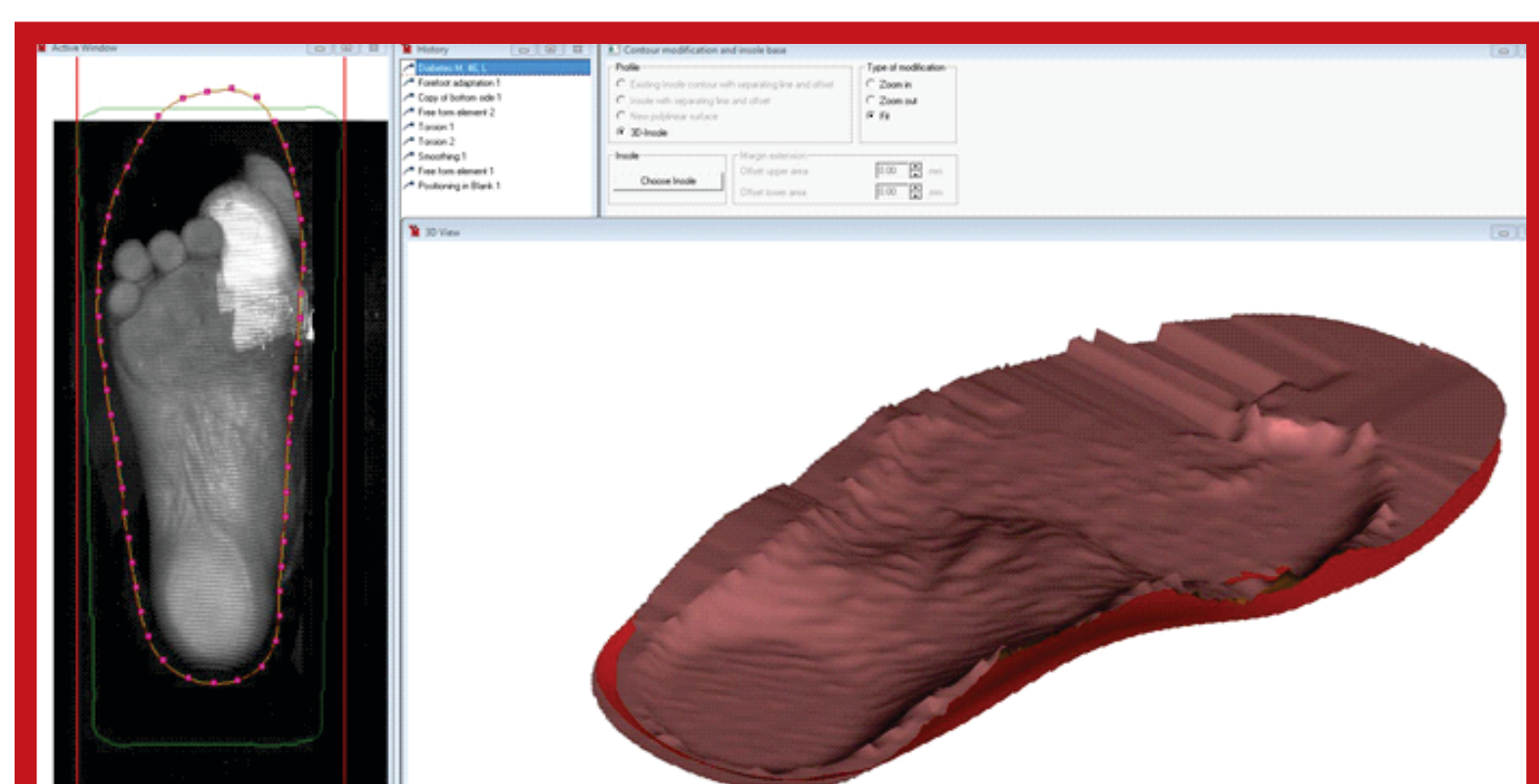
- › Pathological forces found during normal gait pattern in regular footwear depicted in Parotec in shoe pressure measurement

Scan

- › Stationary 3-D weight bearing scan obtained
- › Ability to wipe down scanning surface post scan

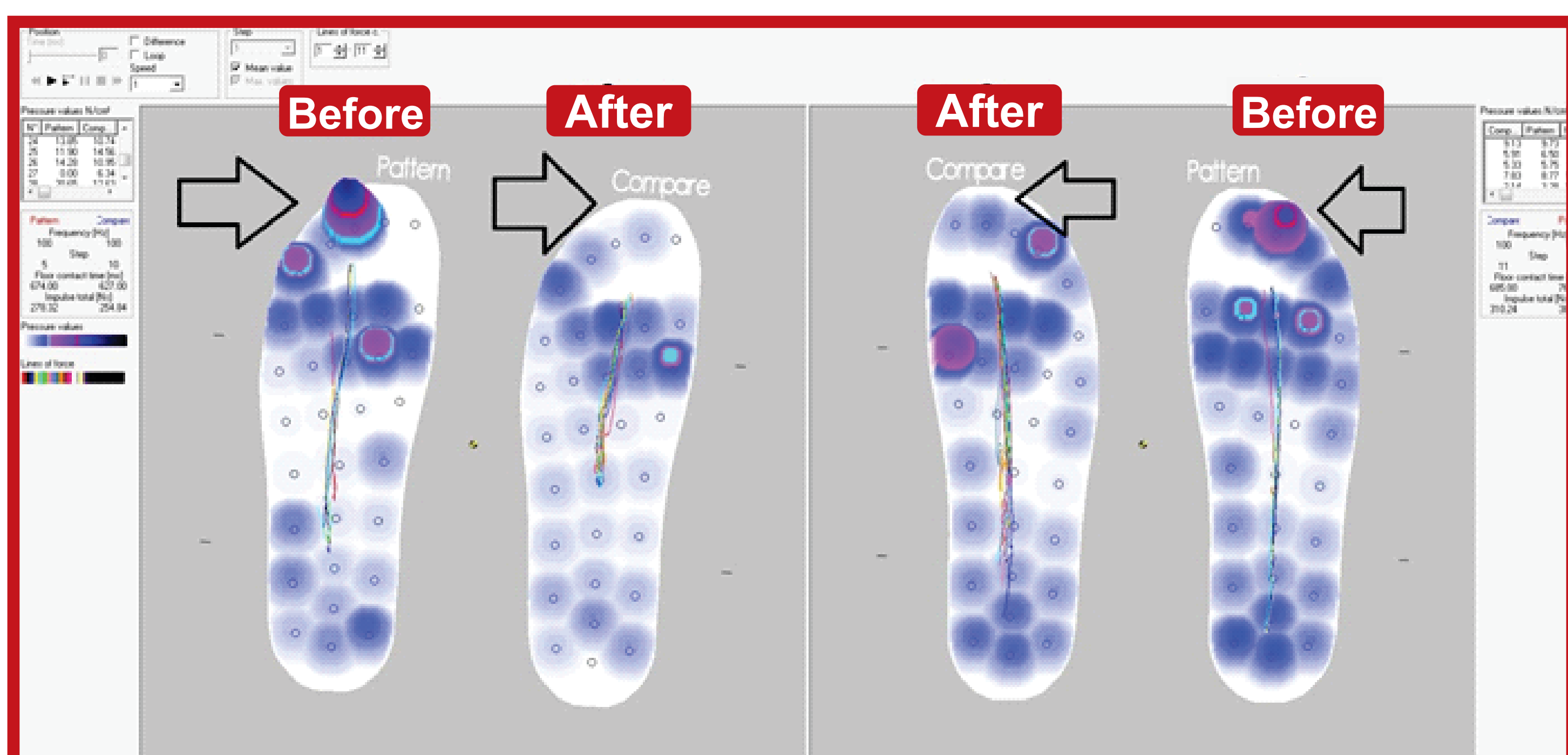
Design of Paromed Devices

- › Diabetic last chosen to fit all wide diabetic footwear.
- › Use of differential milling techniques to adequately offload ulcer sites
- › Density choices for pathology



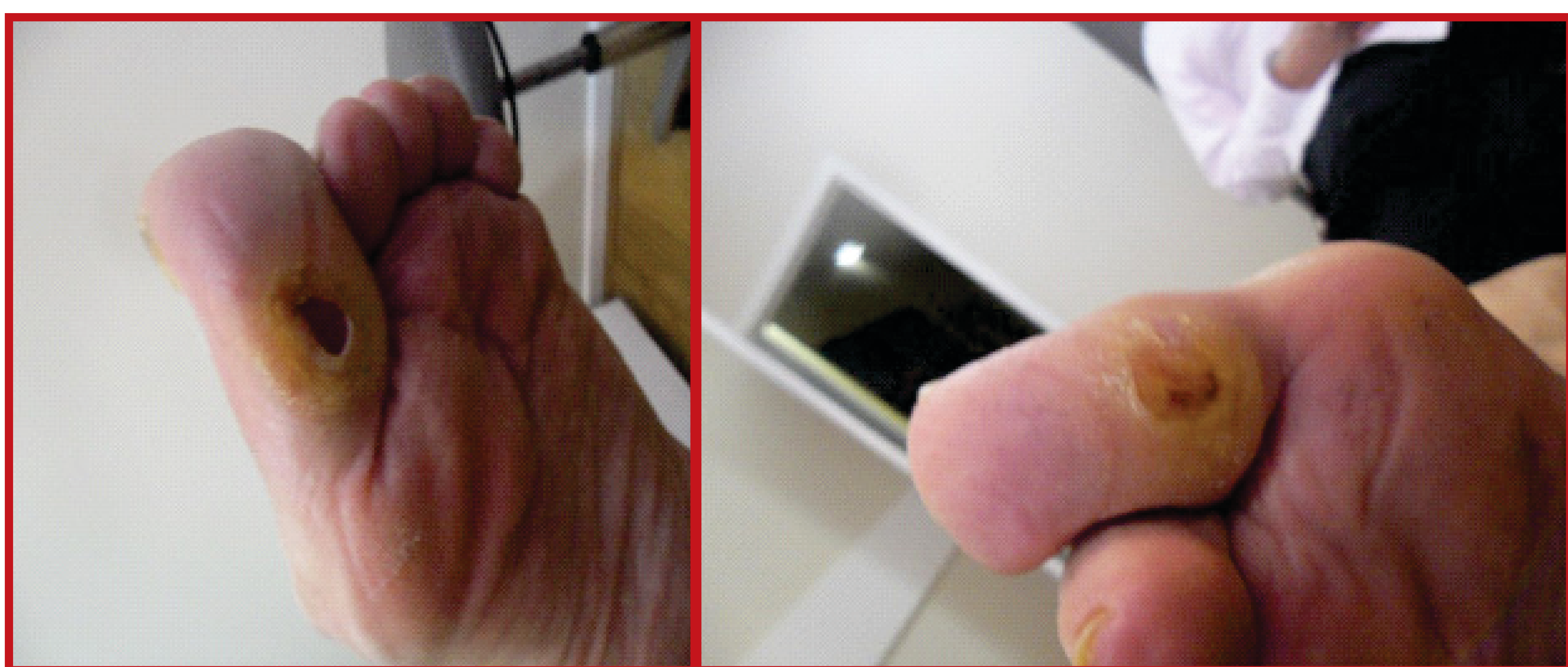
Mill

- › Milling of top and bottom sides
- › Automated poron filled apertures to offload specific sites as per design
- › No seams or ridges on apertures due to automation



Outcome

- › Comparison of Parotec in-shoe pressure measurement, measurements taken without the orthotic and then over the top of the devices.
- › Lesions show immediate signs of healing within 3 weeks.



paromed.com.au